

Master Works



Instruments for a Creative Spirit



BUYER'S GUIDE



Master Works Workshop, Bennington, OK



Russell & Merla Cook

Welcome to the world of Master Works hammer dulcimers!

Master Works instruments, designed by Russell Cook, are among the few elite “performer quality” hammer dulcimers in the world. All of our instruments are crafted by hand in our workshop in Russell’s small hometown of Bennington, Oklahoma. We have been dedicated to setting the standard in innovative dulcimer building and design for more than 40 years. From our introductory Pioneer model, to our most professional custom models, each dulcimer is constructed from the finest materials available, creating lightweight instruments with a rich, mellow tone that stands the test of time.

Russell built his first instrument in 1979 using materials from an old discarded piano. Since then, we’ve come a long way. Russell Cook and Master Works have built over 14,000 instruments. However, upon visiting our workshop, you won’t find a factory of machines manufacturing these beauties. Instead, you’ll be welcomed by a friendly “Howdy!” from a few good folks of southern Oklahoma dedicated to handcrafting the world’s finest hammer dulcimers.



For more information about the history of Master Works, visit us online at www.MasterWorksOK.com

Start your hammer dulcimer journey.

Pioneer Package

16/15 Ranges D3-E6 (2+ Octaves fully chromatic)

More than a student instrument, the Pioneer is a beautiful, full-sized hammer dulcimer made of choice woods producing a high-quality voice from top to bottom. 16 treble and 15 bass courses provide a layout that ranges just over 3 octaves (2 octaves fully chromatic).

The soundboard is carefully crafted from hand-picked, vertical-grain Sipo. Our unique tapered soundboard design allows for greater flexibility, producing increased volume and a sweeter tone. With dense hardwood bridges, Maple pinblocks, Alder endrails, and a laminated Birch back, the portable Pioneer weighs in at approximately 11.5 pounds! The instrument can be finished natural or stained as an upgrade.

Be a Pioneer and step into the wonderful world of hammer dulcimer music!



Upgraded Premium Case and All-Over Cranberry Stain

Pioneer Package		\$869
Optional Upgrades	All-Over Cranberry Stain (Brown available upon request)	+ \$30
	Premium Case	+ \$120
	Stand-up Stand	+ \$100*
	Upgrades available for hammers and tuning wrench	Prices Vary

* Stand-up Stand requires extra shipping costs. All prices are subject to change.



Included Accessories

What's Included in the Pioneer Package?

Everything you need to get started - hammers, tuning wrench, chromatic digital tuner, sit-down stand, and light-duty case.

Ultralight

16/15



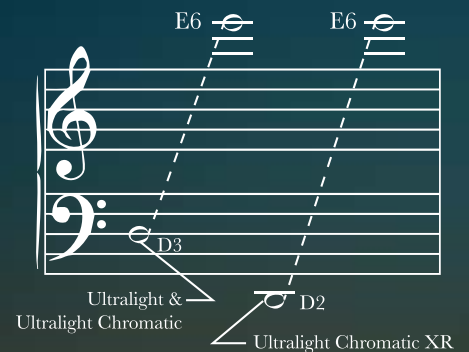
Russell says it is the most instrument for the dollar available on the market.

The Ultralight is a design Russell Cook started in 1983 after watching an older couple attempt to load their large 45 pound hammer dulcimer into the trunk of their automobile. After decades of fine tuning, Master Works has managed to get the weight of this cutting-edge instrument down to approximately **11 pounds!**

This performance-quality hammer dulcimer includes a Sipo soundboard, Morado bridges, Maple pinblocks, and Cherry or Walnut endrails. Exotic wood endrails and stained soundboard are available upon special request.

The Ultralight includes these features:

- Choice tapered soundboard to improve vibration and response as well as reduce weight
- Precisely designed pinblocks to reduce weight
- Solid Alder back to improve sound quality and reduce weight
- Wound strings on lower courses



Three Configurations

Ultralight:

16 treble and 15 bass courses.

Ultralight Chromatic:

5 additional notes make this dulcimer fully chromatic from bottom to top.

Ultralight Chromatic

Extended Range (XR):

The extended range option adds an entire octave to the bottom range of the Ultralight Chromatic.

Ultralight		\$1,499
Ultralight Chromatic		\$1,749
Ultralight Chromatic Extended Range		\$1,899
Common Upgrades	Soundboard Stain	+ \$149
	Dampers	starting at + \$779
	Premium Case	+ \$299

All prices are subject to change.

Russell Cook Edition

17/17

Ranges A2 - F6

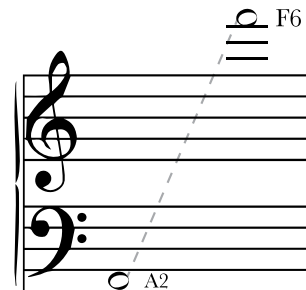
(3+ Octaves fully chromatic)



Russell has often been asked what he would include in his “dream” instrument. Well folks, here it is! The Russell Cook Edition (RCE) offers a versatile range in an unbelievably light-weight instrument of approximately **12 pounds**. The fully chromatic range extends beyond the Ultralight on both the upper and lower ends. With a rich, full voice, this professional quality hammer dulcimer also has numerous upgrade options available.

Below are a few features included in every RCE:

- Fully chromatic with 17 treble and 17 bass courses, making it possible to play seamlessly in the keys of F and Bb and extending the lower range to A2
- Highly engineered Mahogany & Redwood soundboard to add a touch of attitude
- Lower sustain Morado bridges to produce a more controlled rich and mellow tone
- Wound strings on lower courses
- Exclusive RCE sound hole inlays
- Beautiful, dark stained top, or natural finish
- Curly Maple inlaid bridge markers
- Exotic wood endrails (a favorite adornment of Russell’s!)



Russell Cook Edition		\$2,699
Common Upgrades	Dampers	starting at + \$779
	Premium Case	+ \$299
	Endrail Binding	+ \$200
	Internal Sealant	+ \$150
	Schatten Pickups & Installation	+ \$349
	Abalone Soundhole Trim	+ \$150

All prices are subject to change.

“Is all the extra trouble we go through to make these instruments worth it? I believe it is. If you want to get the most out of your once-in-a-lifetime instrument, this is for you-I wouldn’t have anything less for myself.”

-Russell Cook-

Allow your musical spirit to travel with you.

Russell Cook Edition *Extended Range*

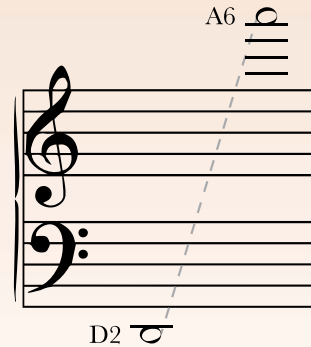
Ranges D2-A6 - 4½ total octaves (Nearly 4 fully chromatic octaves)

The Russell Cook Edition Extended Range (RCE-XR) builds on all the perks and cutting-edge design of our Russell Cook Edition (RCE) by including an even wider range of notes and upgrade options. Officially introduced to the market in 2017, this is one of our newest innovations receiving high praise from professional dulcimer players.

We've replaced the chromatic bridges with extended range bridges, increasing the range to four and a half octaves. The bass is extended down to D2, an entire octave below the D3 found on the standard bass bridge. The treble is extended up to A6, two whole steps higher than the RCE and three whole steps above the Ultralight.

On our RCE-XR, the extended bass is more intuitively located to the right of the bass bridge. As you move from upper left to lower right, the notes logically become lower in pitch. For those who prefer their extended bass on the left, we also offer an XR-Left option.

This versatile, compact design conveniently fits in the overhead of many larger Airliners and weighs approximately **13 pounds!**



The RCE-XR includes all features of the RCE but also comes with more standard features that add versatility and beauty:

- Extended Range (XR) with XR-Right and XR-Left configurations
- Contrasting wood bindings on both endrails
- Contrasting wood corner end cap trim
- Internal sealant to improve stability in new environments and humidity changes



RCE-XR (and RCE)		\$3,799
More Common Upgrades	Upgrade costs for RCE-XR and RCE are the same	
	Curly Maple Pinblocks	+ \$200
	Abalone Endrail Binding	+ \$500
	Dual-Response Bridges	+ \$169
	Custom Soundhole Inlays	price varies

All prices are subject to change.

ge

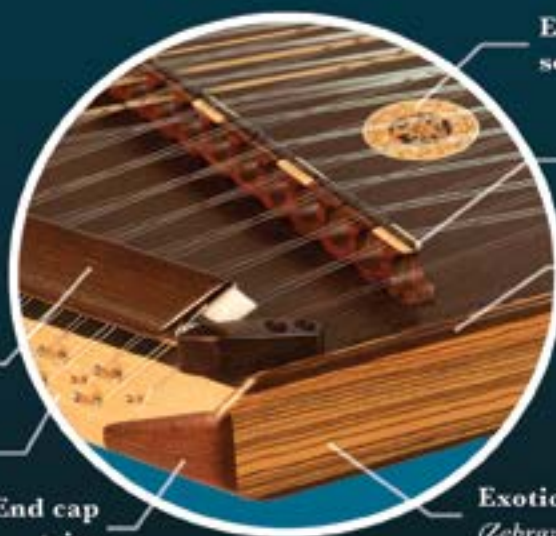


RCE-XR-Right



Premium Case for Ultralight & RCE

The figure below applies to
RCE, RCE-XR, & DulciForte.



Exclusive RCE
soundhole

Curly Maple
bridge
markers

Endrail
bindings

Exotic endrail
(Zebrawood shown)

Dampers
(optional)

Maple
pinblock

End cap
trim

The beauty is in the
details...

DulciForte

20/20 XR-Left & XR-Right

A Revolutionary Innovation in Hammer Dulcimer Design

Ranges A1 - A6 - 5 total octaves (Nearly $4\frac{1}{2}$ fully chromatic octaves)

Many players have requested it for years, and we are very proud to deliver the DulciForte. This highly anticipated, professional model is truly top-of-the-line in every way. For more than 4 years, we consulted with the world's leading performers to create our best instrument. Most importantly, the DulciForte is about quality sound and playability. It is for those who want the best without compromise. The increased size, along with our unique design and techniques, creates a revolutionary instrument that is balanced, responsive, powerful, and pure. Once you hear it, you will understand! Like all Master Works instruments, the DulciForte is portable and only weighs approximately 18.5 pounds.



XR-Left extends to G1

The DulciForte includes every feature of the RCE-XR but doesn't stop there:

- 20/20 XR configuration with a 5-octave chromatic range
- XR bass bridge available on either left or right side
- Playing precision and accuracy improved with slightly increased string spacing
- Sustain of the lower range controlled by Dual-Response Bridges (Morado combined with Cherry)
- Enhanced tuning stability and decreased weight achieved by adding carbon fiber to internal bracing
- Elliptical sound holes, round upon request

DulciForte

\$4,999

Common Upgrades

Dampers	starting at \$899
DulciForte Case	+ \$489
See pricing tables of RCE models for prices on other common upgrade options	

All prices are subject to change.



DulciForte XR-Left
with custom circular soundholes

DulciForte XR-Right
with custom elliptical soundholes

Guide to Upgrades, Add-ons, & Custom Options

Design the Instrument of Your *Dreams*

Contact us or your representative to discuss your custom hammer dulcimer.

Cases

Having a safe & convenient way to move a hammer dulcimer is a must-have for most players. Our cases are constructed of high quality materials, specifically with your instrument in mind.

DulciForte Case

Master Works Damper System - *It's like having two instruments in one!*

Investing in dampers for your hammer dulcimer will vastly increase its versatility and allow you to achieve a new range of sounds and textures in your music.

Our damper system takes just seconds to set up. The pedal can be placed anywhere and operated with ease. Our DulciForte case even has an extra pocket to hold your damper pedal.



**Works sitting or
standing with
no adjustment!**

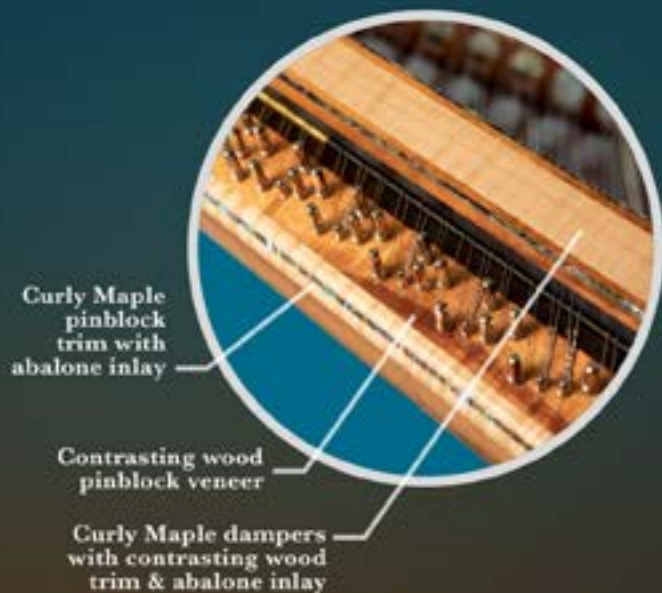


Guide to Upgrades, Add-ons, & Custom Options (cont.)

This page is meant to give you an idea of all the design possibilities we offer on our custom instruments. The prices and availability of materials varies. Contact us or your chosen Master Works representative to learn more about building a custom or heirloom hammer dulcimer. Our talented craftsmen and designers are eager to work with you.

NOTE: Wood & Stain Colors vary from piece to piece. Do NOT rely on this brochure for perfect color representation.

We're ready to build you a **one-of-a-kind** hammer dulcimer.



Exotic Wood Endrails & Contrasting Bindings
The possibilities are endless!



1. Maple 2. Walnut 3. Canarywood 4. Cocobola 5. Exotic Rosewood 6. Paduk
These are just a few examples of exotic endrail wood choices. See our website for dozens more. Our stock and availability of woods varies at any given time, and no two pieces are alike. We'd love to work with you to pick out your perfect endrails.



Custom Soundholes - A Personal Touch

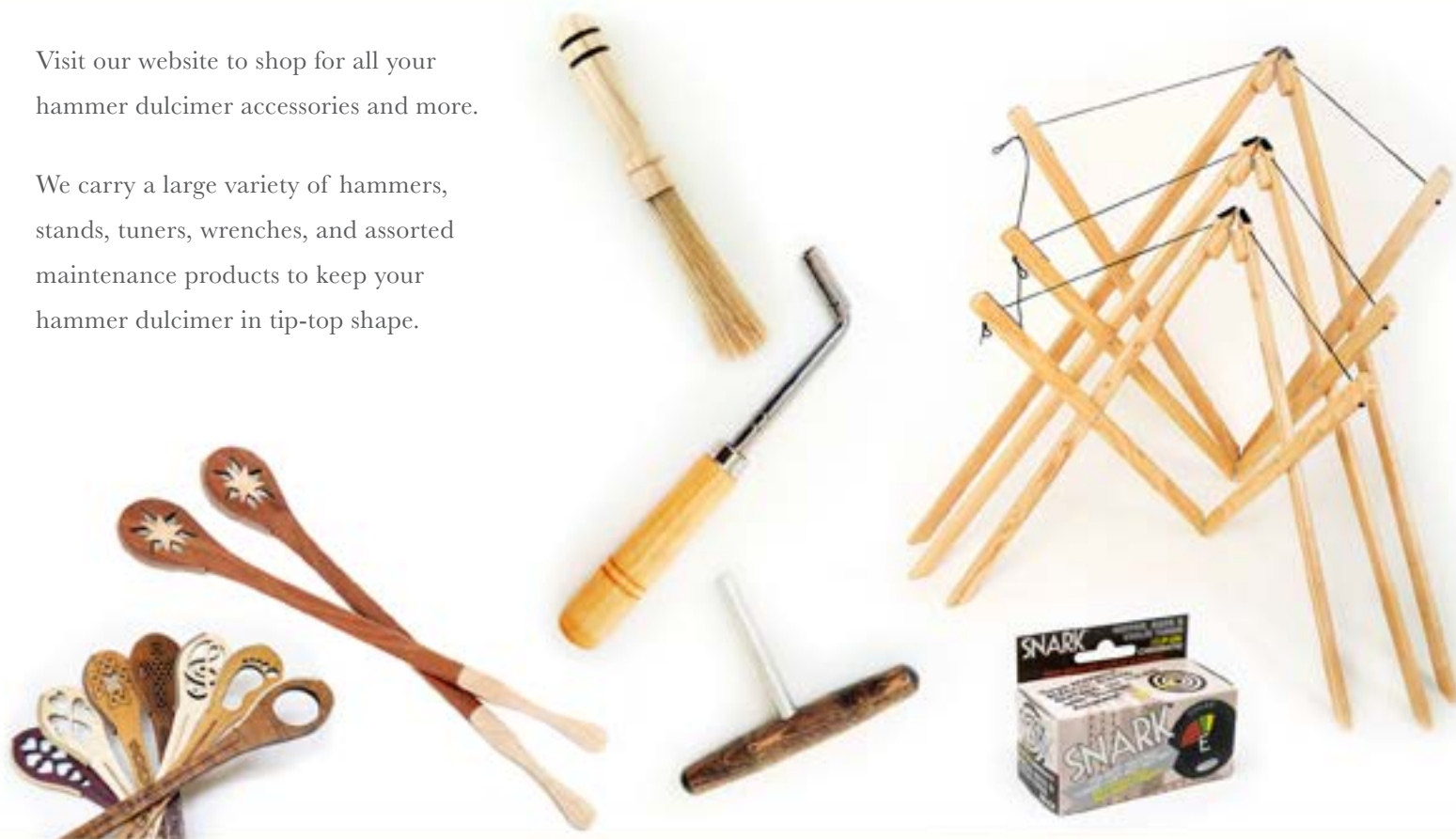
We offer different levels of upgraded soundhole inlay choices. Choose from our many available premium designs, or consider having a unique inlay designed specifically with *you* in mind.



*Master Works is your one-stop-shop for
hammer dulcimer music and accessories.*

Visit our website to shop for all your
hammer dulcimer accessories and more.

We carry a large variety of hammers,
stands, tuners, wrenches, and assorted
maintenance products to keep your
hammer dulcimer in tip-top shape.

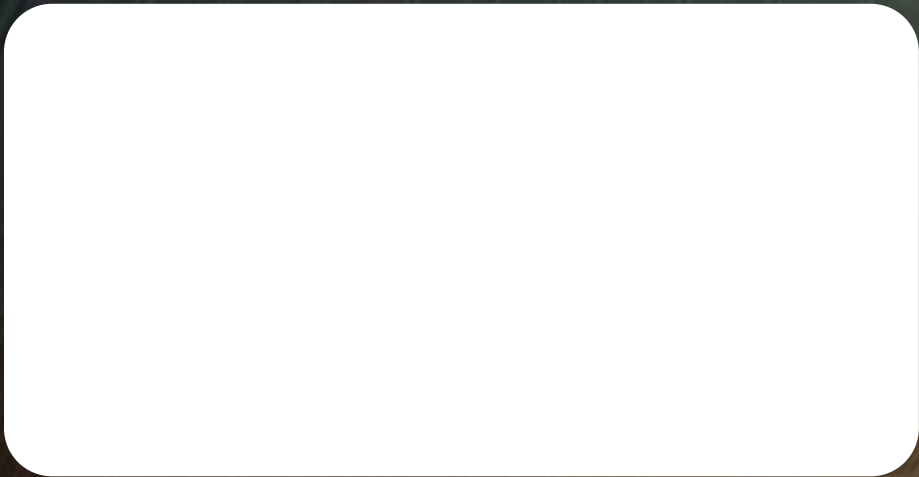


We also build bowed psalteries.



Learn more at www.MasterWorksOK.com

Master Works



Contact us:



(580) 847.2273



info@masterworksok.com

Like, Subscribe,
Follow & Tag Us!



facebook.com/masterworksdulcimers



youtube.com/masterworksdulcimers



instagram: @masterworksdulcimers

Mailing Address:

Master Works

P.O. Box 167

Bennington, Oklahoma 74723

Shipping Address:

Master Works

36613 U.S. Highway 70

Bennington, Oklahoma 74723

Business hours:

9 a.m. - 5 p.m. M-F

Location:

We would be honored for you to visit and tour the workshop. Master Works is located in the beautiful, rolling hills of southeastern Oklahoma 2 hours north of Dallas, TX.

Shipping:

Our products can be shipped anywhere in the world.

www.MasterWorksOK.com

COMPARISON QUICK CHART

	STARTING PRICE	AVERAGE BASE WEIGHT (pounds)	DIMENSIONS (inches)	TREBLE/BASS	OVERALL RANGE	CHROMATIC OCTAVES	CASE, STAND & ELECTRONIC TUNER	PAIR OF HAMMERS & TUNING WRENCH	CHROMATIC BRIDGES	EXTENDED RANGE	XR LEFT OR RIGHT	CHOICE TOP STAIN	CHOICE EXOTIC ENDRAIL	CONTRASTING BINDING	INTERNAL SEALANT	DUAL-RESPONSE BRIDGES	CARBON FIBER BRACING
Pioneer	\$869	11.5	43"x 15.5"	16/15	D3-E6	2+	●	●				○					
Ultralight	\$1,499	11	43.5 x 17.25"	16/15	D3-E6	2+	○	●	○	○		○	○	○	○	○	
Russell Cook Ed.	\$2,699	12	43.5"x 18"	17/17	D3-F6	3+	○	●	●			●	●	○	○	○	
RCE -XR	\$3,799	13	43.5"x 18"	17/17	D2-A6	≈4	○	●	●	●	●	●	●	●	●	○	
DulciForte	\$4,999	18.5	50.5"x 25"	20/20	A1-A6	≈4.5	○	●	●	●	●	●	●	●	●	●	●

○ Available Upgrade (extra cost) ● Included Standard (no charge)

All prices are subject to change.